

1895

Catalogue
of
Photographie
Apparatus

FOR SALE BY

Horgan, Robey & Co.,

54 Essex-Street,

BOSTON, MASS.

5263

Descriptive Catalogue

- Price List -

Photographic Apparatus,

MANUFACTURED BY
Rochester Optical Company,

W. F. CARLTON,

View Cameras for Amateurs and Professionals,

ROCHESTER, N. Y.
ROCHESTER OPTICAL COMPANY,

1895.

The Carlton Camera.

EXTENSIBLE RANGE.



The **CARLTON** Camera, is, without question one of the finest Cameras yet placed on the American market.

The great popularity achieved by the Universal Camera throughout the United States and Canada, led us to believe that the Carlton, with its additional features, would meet with a reception very much more cordial than that given the Universal, and we have not disappointed the result.

When the Universal Camera was introduced, improvement seemed almost impossible. We are progressive, however. Experience suggests new ideas and methods, and we believe in satisfying them in our apparatus.

For the enthusiastic amateur and professional photographer who believes in having the very best of everything, the Carlton, with its beautiful features, adapting it to an almost infinite variety of work, will be found to fully meet their views on the Camera for Amateurs.

The Carlton is made on the same pattern as the Universal, and the description of the latter will apply equally well to the former.

Forward Movement of Camera Back.—When lenses of various widths of angle are employed on the compact form of camera, it sometimes happens that a portion of the top of the lens is included in the picture. To prevent this, the back of the Carlton can be moved forward, thus allowing the lens to be obtained with the lens entirely out of range of the top of the back. This movement is quickly made by the use of two milled heads, which, when loosened, permit the back to be placed above the lens, in which position it can be moved forward.

If space this movement is only required with lenses of standard focus, or "extreme angle," as the latter term might best be used without it.

The Carlton Camera.

REVOLVING TYPE.



The Cover Trip for Tripod.—The top of the Carlton carries its own Tripod top, adapted to the Rochester Special Co.'s Combination Tripod. The Trip, made of metal, is readily fitted to the feet and carries easily and with great steadiness, permitting the operator to adjust the Camera in any direction. A small self-lock screw is found in position.

All Carlton Cameras have double spring back. The dimensions are the same as given for the Universal.

The price includes one Kodageneo Triplet Lens, with yellow glass; Kodageneo Combination Tripod and Camera Case, but not film.

The Carlton Camera, in sizes to fit on bellows, are furnished with either a short or long camera case. The former carries the camera and three holders only; the latter will hold the camera, six holders, Combination Tripod, and is also in full 1/4 x 1/2 inch; there is a compartment for lenses. In ordering, specify style of case desired.

Size of Plate	Price Camera	Height of Camera	Weight Camera
4 x 5	14.00	4.12 1/2	2.00
4 1/2 x 5 1/2	17.00	4.12 1/2	2.00
5 x 7	21.00	4.12 1/2	2.00
5 1/2 x 7 1/2	25.00	4.12 1/2	2.00
6 x 8 1/2	29.00	4.12 1/2	2.00
6 1/2 x 8 1/2	33.00	4.12 1/2	2.00
7 x 10	37.00	4.12 1/2	2.00

The Universal Camera.

REYNOLDS BACK.



SMALL REYNOLDS UNIVERSAL, SMALL REYNOLDS.

The Universal Camera is a modified English pattern and is the most compact camera in use, the 3×4 being but $1\frac{1}{2}$ inches thick when folded and weighs but 4 $\frac{1}{2}$ pounds.

It has extra long bellows, the 3×4 having a focal capacity of 19 inches and other sizes in proportion; this allows the use of lenses of extreme length of focus, while wide angle lenses can also be used. Owing to the extra length of bellows the camera can be used for copying and enlarging, if desired, and is fast in use as near a universal camera as can well be made.

The Universal is made from selected materials, finished in the best possible style, and has all latest improvements. We have aimed so high to make every working point as near perfection as possible.

The camera has a square, the back being reversible, so that when a plate is wanted either horizontally or vertically on the plate, the change can be effected in *five* seconds by simply reversing the back instead of the entire camera back.

The ground glass frame is held to the camera back by two springs which allow it to flex as it is moved the instant between the ground glass and camera back.

By this method the ground glass is not at all liable to fracture besides being a most convenient method of applying the glass-holder to the camera.

While very compact the Universal is simple of construction, there being no loose screws or parts. It is set up by tightening two set screws and is folded again by loosening the same screws.

The Monitor Camera.

ESTABLISHED 1842.



The Monitor is exceedingly compact and light in weight, and yet is very simple of manipulation, and has two milled heads are tightened in setting up, so the front of the camera is locked automatically in position when raised.

The Perfection Jr. Plate Holder is used with the Monitor, and is a feature of the outfit. This holder is the same as fitted to the Perfection Camera, and is mounted so to be the top holder in position and in the most compact.

The Monitor is provided with a leather handle, so that it may be carried without the case if desired, as one holder can be carried between the ground glass and camera back.

Price includes Camera Carrying Case, one Perfection Jr. Holder and Combination Tripod, but not lens.

Monitor Cameras, up to and including 8 x 10, are supplied with either a short or long Carrying Case. The former carries the camera and three holders. The latter holds camera, six holders and Combination Tripod, and its size up to 11 1/2 x 11 1/2 inches, there is a space for lens. In ordering, specify style of case desired.

Size of lens	Front height	Height of camera	Price when
4 x 5	12 1/2	8 1/2	\$14.00
5 x 7	17	12 1/2	17.00
6 x 9	20	15	20.00
7 1/2 x 11 1/2	24 1/2	18 1/2	25.00
8 x 10	24	18 1/2	25.00
10 x 12	28 1/2	22 1/2	34.00
11 x 14	31 1/2	24	41.00

The Kenwood Camera.

STEREOSCOPIC WORK.



The Kenwood Camera is another new form of the compact camera, its special feature being the wide front for stereoscopic work. It is the only camera in the market of the compact pattern with which Brown Lenses can be used.

The Kenwood is very compact, the $4\frac{1}{2} \times 4\frac{1}{2}$ measuring but $2\frac{1}{2}$ inches thick, when closed, and weighs only 4 pounds. It has extra length of draw, same as the Universal and Monitor, for very long focus lenses, and can be closed for work with extremely short focus lenses, as the back will slide forward on the bed, same as the Monitor, by loosening one milled head on either side of the bed.

The Kenwood is made from selected mahogany, highly polished. The metal work is of brass, polished and lacquered. The bellows is made of dark red leather of finest quality, presenting an exceedingly handsome appearance.

The back of the Kenwood is square and may be quickly reversed for upright or horizontal pictures. The ground-glass screen is spring actuated, and reaches for the insertion of the glass-holder.

The Kenwood has double spring, rising and falling front, and has rack and pinion, the movement being perfectly smooth.

The rising and falling front is held by a spring, working in a jacket, avoiding the necessity of milled heads.

The Kenwood is easily manipulated, as it requires the adjustment of only two milled heads, when setting up. The front lens comes naturally in position, the same as the Monitor.

The Ideal Camera.

STEREOSCOPIC VIEW.

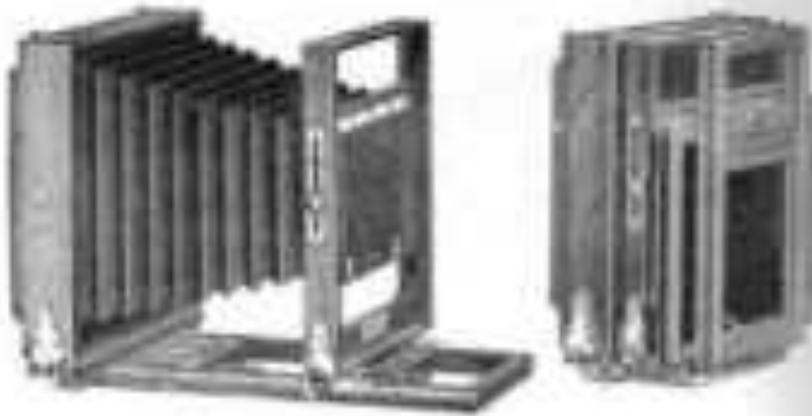


FIG. 1.

FIG. 2.

The *Ideal Camera* is pronounced by all to be one of the best view cameras ever placed on the market. It is the result of much study and many experiments, made with a view of producing an instrument combining all the qualities required in a View Camera for the professional or amateur photographer.

It is made of selected materials, finished in the best possible style, every part being as near perfect as possible. All metal parts are made of brass, polished and lacquered.

The *Ideal* has reversible back, same as the *Universal*, with our spring-wire ground-glass frame by which the plate holder is inserted between the ground glass and camera back.

It has fine rack and pinion focusing movement, the front moving forward leaving the back always stationary. When the focus has been obtained, the front is changed by turning an independent milled lens gland inside the one which turns the pinion.

As shown in the cut, the bellows are cross slanted, though 3 x 7 and others are made with frame wide enough for stereoscopic work.

Our method of applying the horizontal spring is very simple, and it takes no additional room, so that the double spring *Ideal* is no less compact than the single spring.

The bell is in two sections, one with a line of short fuses, the same length is not required and can be removed.

The Ideal Camera.

IMPROVED MAKE.



FIG. 2. (4 x 10)

Taken in its entirety we can recommend this form, to both the professional and amateur photographer.

From 4 1/2 to 6 and including, 3 1/2 x 5 1/2 are made same as Fig. 1, while 6 1/2 to 8 1/2 x 10, inclusive, are made same as Fig. 2.

We make 14 x 17, and larger, with back focus and with focusing handle, instead of rack and pinion.

Price includes one Perfecting Photo-holder and Camera Carrying Case, but not lens or tripod.

The Carrying Case will hold two more photo-holders.

With case shown 11 x 14 we use English Book Hobbles.

Size of lens.	Front element.	Weight (approx.)	Single spring.	Double spring.
3 1/2 x 5 1/2	1 1/2	1 1/2	\$17.00	\$14.00
4 x 5	1 3/4	1 3/4	17.00	14.00
4 1/2 x 5 1/2	2	2	17.00	14.00
5 x 6	2 1/4	2 1/4	17.00	14.00
5 1/2 x 6 1/2	2 1/2	2 1/2	17.00	14.00
6 x 7	2 3/4	2 3/4	17.00	14.00
6 1/2 x 7 1/2	3	3	17.00	14.00
7 x 8	3 1/4	3 1/4	17.00	14.00
7 1/2 x 8 1/2	3 1/2	3 1/2	17.00	14.00
8 x 9	3 3/4	3 3/4	17.00	14.00
8 1/2 x 9 1/2	4	4	17.00	14.00
9 x 10	4 1/4	4 1/4	17.00	14.00
9 1/2 x 10 1/2	4 1/2	4 1/2	17.00	14.00
10 x 11	4 3/4	4 3/4	17.00	14.00
10 1/2 x 11 1/2	5	5	17.00	14.00
11 x 12	5 1/4	5 1/4	17.00	14.00
11 1/2 x 12 1/2	5 1/2	5 1/2	17.00	14.00
12 x 13	5 3/4	5 3/4	17.00	14.00
12 1/2 x 13 1/2	6	6	17.00	14.00
13 x 14	6 1/4	6 1/4	17.00	14.00
13 1/2 x 14 1/2	6 1/2	6 1/2	17.00	14.00
14 x 15	6 3/4	6 3/4	17.00	14.00
14 1/2 x 15 1/2	7	7	17.00	14.00
15 x 16	7 1/4	7 1/4	17.00	14.00
15 1/2 x 16 1/2	7 1/2	7 1/2	17.00	14.00
16 x 17	7 3/4	7 3/4	17.00	14.00
16 1/2 x 17 1/2	8	8	17.00	14.00
17 x 18	8 1/4	8 1/4	17.00	14.00
17 1/2 x 18 1/2	8 1/2	8 1/2	17.00	14.00
18 x 19	8 3/4	8 3/4	17.00	14.00
18 1/2 x 19 1/2	9	9	17.00	14.00
19 x 20	9 1/4	9 1/4	17.00	14.00
19 1/2 x 20 1/2	9 1/2	9 1/2	17.00	14.00
20 x 21	9 3/4	9 3/4	17.00	14.00
20 1/2 x 21 1/2	10	10	17.00	14.00
21 x 22	10 1/4	10 1/4	17.00	14.00
21 1/2 x 22 1/2	10 1/2	10 1/2	17.00	14.00
22 x 23	10 3/4	10 3/4	17.00	14.00
22 1/2 x 23 1/2	11	11	17.00	14.00
23 x 24	11 1/4	11 1/4	17.00	14.00
23 1/2 x 24 1/2	11 1/2	11 1/2	17.00	14.00
24 x 25	11 3/4	11 3/4	17.00	14.00
24 1/2 x 25 1/2	12	12	17.00	14.00
25 x 26	12 1/4	12 1/4	17.00	14.00
25 1/2 x 26 1/2	12 1/2	12 1/2	17.00	14.00
26 x 27	12 3/4	12 3/4	17.00	14.00
26 1/2 x 27 1/2	13	13	17.00	14.00
27 x 28	13 1/4	13 1/4	17.00	14.00
27 1/2 x 28 1/2	13 1/2	13 1/2	17.00	14.00
28 x 29	13 3/4	13 3/4	17.00	14.00
28 1/2 x 29 1/2	14	14	17.00	14.00
29 x 30	14 1/4	14 1/4	17.00	14.00
29 1/2 x 30 1/2	14 1/2	14 1/2	17.00	14.00
30 x 31	14 3/4	14 3/4	17.00	14.00
30 1/2 x 31 1/2	15	15	17.00	14.00
31 x 32	15 1/4	15 1/4	17.00	14.00
31 1/2 x 32 1/2	15 1/2	15 1/2	17.00	14.00
32 x 33	15 3/4	15 3/4	17.00	14.00
32 1/2 x 33 1/2	16	16	17.00	14.00
33 x 34	16 1/4	16 1/4	17.00	14.00
33 1/2 x 34 1/2	16 1/2	16 1/2	17.00	14.00
34 x 35	16 3/4	16 3/4	17.00	14.00
34 1/2 x 35 1/2	17	17	17.00	14.00
35 x 36	17 1/4	17 1/4	17.00	14.00
35 1/2 x 36 1/2	17 1/2	17 1/2	17.00	14.00
36 x 37	17 3/4	17 3/4	17.00	14.00
36 1/2 x 37 1/2	18	18	17.00	14.00
37 x 38	18 1/4	18 1/4	17.00	14.00
37 1/2 x 38 1/2	18 1/2	18 1/2	17.00	14.00
38 x 39	18 3/4	18 3/4	17.00	14.00
38 1/2 x 39 1/2	19	19	17.00	14.00
39 x 40	19 1/4	19 1/4	17.00	14.00
39 1/2 x 40 1/2	19 1/2	19 1/2	17.00	14.00
40 x 41	19 3/4	19 3/4	17.00	14.00
40 1/2 x 41 1/2	20	20	17.00	14.00
41 x 42	20 1/4	20 1/4	17.00	14.00
41 1/2 x 42 1/2	20 1/2	20 1/2	17.00	14.00
42 x 43	20 3/4	20 3/4	17.00	14.00
42 1/2 x 43 1/2	21	21	17.00	14.00
43 x 44	21 1/4	21 1/4	17.00	14.00
43 1/2 x 44 1/2	21 1/2	21 1/2	17.00	14.00
44 x 45	21 3/4	21 3/4	17.00	14.00
44 1/2 x 45 1/2	22	22	17.00	14.00
45 x 46	22 1/4	22 1/4	17.00	14.00
45 1/2 x 46 1/2	22 1/2	22 1/2	17.00	14.00
46 x 47	22 3/4	22 3/4	17.00	14.00
46 1/2 x 47 1/2	23	23	17.00	14.00
47 x 48	23 1/4	23 1/4	17.00	14.00
47 1/2 x 48 1/2	23 1/2	23 1/2	17.00	14.00
48 x 49	23 3/4	23 3/4	17.00	14.00
48 1/2 x 49 1/2	24	24	17.00	14.00
49 x 50	24 1/4	24 1/4	17.00	14.00
49 1/2 x 50 1/2	24 1/2	24 1/2	17.00	14.00
50 x 51	24 3/4	24 3/4	17.00	14.00
50 1/2 x 51 1/2	25	25	17.00	14.00
51 x 52	25 1/4	25 1/4	17.00	14.00
51 1/2 x 52 1/2	25 1/2	25 1/2	17.00	14.00
52 x 53	25 3/4	25 3/4	17.00	14.00
52 1/2 x 53 1/2	26	26	17.00	14.00
53 x 54	26 1/4	26 1/4	17.00	14.00
53 1/2 x 54 1/2	26 1/2	26 1/2	17.00	14.00
54 x 55	26 3/4	26 3/4	17.00	14.00
54 1/2 x 55 1/2	27	27	17.00	14.00
55 x 56	27 1/4	27 1/4	17.00	14.00
55 1/2 x 56 1/2	27 1/2	27 1/2	17.00	14.00
56 x 57	27 3/4	27 3/4	17.00	14.00
56 1/2 x 57 1/2	28	28	17.00	14.00
57 x 58	28 1/4	28 1/4	17.00	14.00
57 1/2 x 58 1/2	28 1/2	28 1/2	17.00	14.00
58 x 59	28 3/4	28 3/4	17.00	14.00
58 1/2 x 59 1/2	29	29	17.00	14.00
59 x 60	29 1/4	29 1/4	17.00	14.00
59 1/2 x 60 1/2	29 1/2	29 1/2	17.00	14.00
60 x 61	29 3/4	29 3/4	17.00	14.00
60 1/2 x 61 1/2	30	30	17.00	14.00
61 x 62	30 1/4	30 1/4	17.00	14.00
61 1/2 x 62 1/2	30 1/2	30 1/2	17.00	14.00
62 x 63	30 3/4	30 3/4	17.00	14.00
62 1/2 x 63 1/2	31	31	17.00	14.00
63 x 64	31 1/4	31 1/4	17.00	14.00
63 1/2 x 64 1/2	31 1/2	31 1/2	17.00	14.00
64 x 65	31 3/4	31 3/4	17.00	14.00
64 1/2 x 65 1/2	32	32	17.00	14.00
65 x 66	32 1/4	32 1/4	17.00	14.00
65 1/2 x 66 1/2	32 1/2	32 1/2	17.00	14.00
66 x 67	32 3/4	32 3/4	17.00	14.00
66 1/2 x 67 1/2	33	33	17.00	14.00
67 x 68	33 1/4	33 1/4	17.00	14.00
67 1/2 x 68 1/2	33 1/2	33 1/2	17.00	14.00
68 x 69	33 3/4	33 3/4	17.00	14.00
68 1/2 x 69 1/2	34	34	17.00	14.00
69 x 70	34 1/4	34 1/4	17.00	14.00
69 1/2 x 70 1/2	34 1/2	34 1/2	17.00	14.00
70 x 71	34 3/4	34 3/4	17.00	14.00
70 1/2 x 71 1/2	35	35	17.00	14.00
71 x 72	35 1/4	35 1/4	17.00	14.00
71 1/2 x 72 1/2	35 1/2	35 1/2	17.00	14.00
72 x 73	35 3/4	35 3/4	17.00	14.00
72 1/2 x 73 1/2	36	36	17.00	14.00
73 x 74	36 1/4	36 1/4	17.00	14.00
73 1/2 x 74 1/2	36 1/2	36 1/2	17.00	14.00
74 x 75	36 3/4	36 3/4	17.00	14.00
74 1/2 x 75 1/2	37	37	17.00	14.00
75 x 76	37 1/4	37 1/4	17.00	14.00
75 1/2 x 76 1/2	37 1/2	37 1/2	17.00	14.00
76 x 77	37 3/4	37 3/4	17.00	14.00
76 1/2 x 77 1/2	38	38	17.00	14.00
77 x 78	38 1/4	38 1/4	17.00	14.00
77 1/2 x 78 1/2	38 1/2	38 1/2	17.00	14.00
78 x 79	38 3/4	38 3/4	17.00	14.00
78 1/2 x 79 1/2	39	39	17.00	14.00
79 x 80	39 1/4	39 1/4	17.00	14.00
79 1/2 x 80 1/2	39 1/2	39 1/2	17.00	14.00
80 x 81	39 3/4	39 3/4	17.00	14.00
80 1/2 x 81 1/2	40	40	17.00	14.00
81 x 82	40 1/4	40 1/4	17.00	14.00
81 1/2 x 82 1/2	40 1/2	40 1/2	17.00	14.00
82 x 83	40 3/4	40 3/4	17.00	14.00
82 1/2 x 83 1/2	41	41	17.00	14.00
83 x 84	41 1/4	41 1/4	17.00	14.00
83 1/2 x 84 1/2	41 1/2	41 1/2	17.00	14.00
84 x 85	41 3/4	41 3/4	17.00	14.00
84 1/2 x 85 1/2	42	42	17.00	14.00
85 x 86	42 1/4	42 1/4	17.00	14.00
85 1/2 x 86 1/2	42 1/2	42 1/2	17.00	14.00
86 x 87	42 3/4	42 3/4	17.00	14.00
86 1/2 x 87 1/2	43	43	17.00	14.00
87 x 88	43 1/4	43 1/4	17.00	14.00
87 1/2 x 88 1/2	43 1/2	43 1/2	17.00	14.00
88 x 89	43 3/4	43 3/4	17.00	14.00
88 1/2 x 89 1/2	44	44	17.00	14.00
89 x 90	44 1/4	44 1/4	17.00	14.00
89 1/2 x 90 1/2	44 1/2	44 1/2	17.00	14.00
90 x 91	44 3/4	44 3/4	17.00	14.00

The Empire State Camera.

EXTENSIBLE BACK.



The horizontal swing is attached to a very simple support, occupying no additional room, hence the double swing is no less compact than the single swing camera.

The back is reversible, and has one spring actuated ground-glass frame. The holder is inserted between the ground-glass and camera back. When in position the slide may be drawn from the top, bottom, or either side as desired.

In recommending the Empire State as a thoroughly practical camera in every particular, we feel that our claims will be even more than justified by an examination of the instrument itself, the price is so very convincing an idea of its worth.

Price includes Camera Carrying Case and one Perfection Holder, but no lens or tripod.

With sizes above 11 & 14 we send English Back Holder.

The Carrying Case will hold two extra plate holders.

Size of lens	Focal length	Weight of camera	Weight of lens	Weight of case	Weight of lens
3" N 1	11 1/2"	6	1/2	\$17.00	\$14.00
3" N 2	15"	7	1/2	18.00	15.00
4 1/2" N 3 1/2	18 1/2"	10	1/2	22.00	18.00
5" N 4	21"	12	1/2	24.00	20.00
6 1/2" N 5 1/2	25 1/2"	16	1/2	28.00	24.00
8" N 7	31"	21	1/2	32.00	28.00
10" N 10	39"	28	1/2	38.00	34.00
12" N 12	47"	35	1/2	44.00	40.00
15" N 15	58 1/2"	45	1/2	52.00	48.00
18" N 18	69"	55	1/2	60.00	56.00

The Standard Camera.

REVOLVING BACK.



The Standard Camera is made on the same general style as the Empire State, though with back frame and without rack and pinion.

Though low in price the Standard is thoroughly well made of unvarnished mahogany, finely finished in shellac; the metal work is of polished and hardened brass, and as much pains are taken with the working parts as with the higher priced cameras.

The Standard has reversible back fitted with our spring-acting ground glass frame, same as the Ideal and Universal. It is furnished with the Perfectus Plate-Holder, and the slide may be drawn from the top or either side,—a great convenience when working in confined situations.

The horizontal swing is attained in a manner similar to the Empire State and requires no additional work.

For those desiring a thoroughly reversible camera with all the important adjustments yet at a moderate cost, we recommend the Standard.

The price includes Carrying Case and one Perfectus Plate-Holder, but no lens or tripod.

The Carrying Case will hold two extra plate holders.

Model No.	Plate Capacity	Height of Camera	Height of Lens	Weight (Case)
1 1/2 x 4 1/2	450 No.	4 1/2 In.	2 1/2 In.	\$11.00
2 x 4 1/2	300 "	4 "	2 1/2 In.	13.00
2 1/2 x 4 1/2	150 "	4 1/2 "	2 1/2 In.	14.00
3 x 4 1/2	75 "	5 1/2 "	2 1/2 In.	14.00
3 1/2 x 4 1/2	45 "	6 1/2 "	2 1/2 In.	16.00
4 x 4 1/2	30 "	7 1/2 "	2 1/2 In.	18.00

New Model Camera.



The New Model Camera is well known, it having been on the market for ten years, and its popularity attests its merits. This camera differs with the New Model Improved the reputation of being the most popular camera in market for constant use.

It is very light and compact, making a very desirable camera for the amateur who desires a good but cheap outfit.

The New Model is made of selected claret, well finished, and with nickel trimmings. It is provided with sliding front, sliding bed, and is easily reversed for upright pictures with our new adjustable swinging clamp, by which means the strain is entirely on the bed when it swings.

The sliding part of bed is held rigid by our new clamp-back, the quickest, easiest, and most effective device yet used for the purpose.

Price includes K. H. Cole Single View Lens, Standard Folding Tripod, Carrying Case and our Protection Film-Holder (except for 10, when added lens and tripod are included).

The Carrying Case will hold two extra glass-holders.

Size of View	Front Quality	Weight of Camera	Weight of Lens	Weight of Case
2 1/2 x 3 1/2	112 W.	1 1/4 lbs.	2 1/2 oz.	\$11.00
4 x 5	112 W.	1 1/2 lbs.	3 oz.	15.00
4 1/2 x 6 1/2	112 W.	2 lbs.	3 1/2 oz.	17.00
5 x 7	112 W.	2 1/2 lbs.	4 oz.	19.00
6 x 8	112 W.	3 lbs.	4 1/2 oz.	21.00
6 1/2 x 9 1/2	112 W.	3 1/2 lbs.	5 oz.	23.00
8 x 10	112 W.	4 lbs.	5 1/2 oz.	25.00

* Not including lens or tripod.

New Model Stereoscopic Camera.



The revival of the stereograph necessarily creates a demand for a first-class Stereoscopic Camera. To meet this demand, we have devised the New Model Stereoscopic Camera, believing it will find favor with all who are interested in this most fascinating branch of photography.

This Camera is the lightest, most compact and simplest instrument yet placed on the market, combining the many desirable features usually found in a Stereo Camera. It is made from the best Hindustani mahogany, highly polished, with nickel trimmings.

The New Model Stereoscopic Camera is patterned closely after the New Model Improved, having rack and pinion for focusing; sliding front; sliding back and is convertible by means of one new adjustable reversing clamp. The sliding back is held tight by a clamp-back, which is the quickest, easiest and best device yet produced for the purpose.

The partition and front board are removable so that the camera may be used, if desired, for other than stereoscopic pictures, by the addition of a lens of sufficient size to cover the full plate.

Each camera is enclosed in a neat carrying case, with room for two extra Perfective Plates.

Price for 3 x 4, with matched pair of No. 1 B. O. Co.'s View

Lenses, Cloth Binding Tripod and one Perfective Holder,	\$25.00
Complete without Lenses,	16.00
Complete without Lenses or Tripod,	14.00

Midget Pocket Camera.



The Midget Pocket Camera is the most compact camera ever made, being but $1\frac{1}{2}$ inches thick when folded. The $2\frac{1}{2} \times 4\frac{1}{2}$ can be carried in an ordinary coat pocket, while the 4×5 can be carried in an overcoat pocket. On account of its compactness it is invaluable for ladies, tourists, bicyclists and mountaineers.

While so very compact, the $2\frac{1}{2} \times 4\frac{1}{2}$ camera has a focal length of $6\frac{1}{2}$ inches, while the 4×5 has $7\frac{1}{2}$ inches, so that any lens can be used if desired.

The Midget Pocket Camera is made in the best possible manner, of selected materials; tightly polished, with metal work of polished and tempered brass.

It has rising front, vertical swing and has fine rack and pinion focusing movement; the ground glass is spring setting, the ladder sliding between it and the camera box.

The lens is a rapid Bostrom of great depth of focus and freedom of tilt, giving brilliant definition, and will cover the plate in the extreme corners, even with the slide

up; the lens is made compact enough to remain attached to the lens board and be covered by the camera when the camera is folded.

The lens is provided with rotating diaphragm and blue glass for instantaneous views; this shutter is the same as used on Prisms and some fully described on page 27.



The Premier.

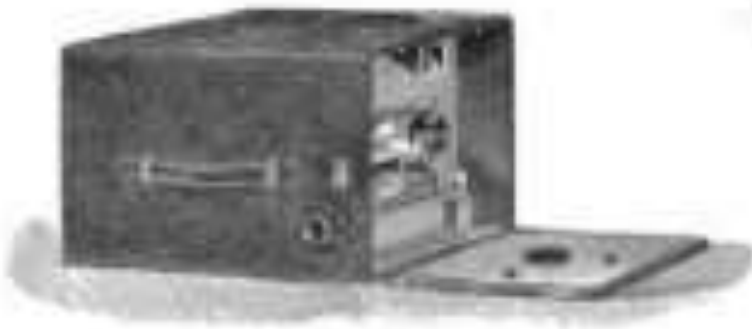


FIG. 2

The Premier ground-glass screen is attached permanently to the camera-back, and slides easily on two brass supports into any desired position, thus obtaining the magnification desired for a reasonable screen, as supplied with most Hand Cameras.

The Single Lens furnished with the Premier is the well known K. O. Co.'s View Lens. The Rapid Rectilinear lens is made especially for this camera, and will be found excellent for general work, though at a very moderate price. Both lenses have coating diaphragms. The Premier is so constructed that any other lens may be substituted if desired.

Glass Plates, Oak or Hill Plates may all be used, as the Plates, Film and Roll Holders are interchangeable.

The Premier is made to hold either four or six plate-holders, the difference in length being 1/4 inches. Price is the same for either size. The camera for four holders measures only 4 1/2 x 2 1/2 x 1 1/2 inches and weighs but four pounds.

Black canvas leather is used in covering all Premiers, and a leather handle is attached for carrying, the camera presenting a very business appearance. Made only in U.S.A.

PRICE:

Premier, with one Plate Holder.	\$25.00
With Rapid Rectilinear Lens.	\$27.00
Extra Premier Plate-Holders.	1.00
Extra Film Holder (for oak Glass).	1.25
Roll Holder, empty.	2.00
Roll of Film, 12 exposures.	1.25
Roll of Film, 24 exposures.	2.00
Canvas Covered Case for Premier, with Shoulder Strap.	1.50
Lumber	2.00

The Premaret.



The Premaret Camera, in its reality, a miniature form of the Premier, but constructed throughout of selected materials and covered with fine grained leather, the tools being finished in shellac.

The Premaret has swing back, and rising and falling front, the working parts of which are entirely inside the camera. The axis of the swing is at the center, which is optically correct, and the focus is influenced by the dial is not disturbed.

The ground glass screen is spring setting. It does not close after withdrawing the holder but remains open for its re-insertion. A touch on the brass lattice will close the screen for focusing.

The lens and shutter are precisely the same as furnished with the Premier, (see illustration, page 27). Two lenses are provided for upright and horizontal pictures, also two tripod plates for use on a tripod. There is a panel at the back for focusing.

Glass plates, Celluloid Roll film may all be used in the Premaret. The outside dimensions are 3 1/4 x 2 1/2 x 3 1/4 inches, including space for three French plate holders, or Roll Holder.

PRICE.

	U.S.
Premaret, with one Holder,	\$20.00
With Rapid Rectilinear Lens,	42.00
Extra Plate Holder (French Holder), each,	1.45
French Plate Holder (for 2 1/2 film),	1.25
Roll Holder, complete,	10.00
Roll of Film, 47 exposures,	2.00
Leather Carrying Case for Premaret, with Shoulder Strap,	2.00

The Premo.



The Premo is the most complete and practical hand camera ever placed on the market, possessing all latest improvements, and yet is the most compact camera ever made, the 2×3 measuring, when closed, but $1\frac{1}{2} \times 1\frac{1}{2} \times 1\frac{1}{4}$ inches, and weighs but a trifle over two pounds.

The Premo has Spring Back and Rising and Falling Front, the working parts of which are entirely within the camera. In fact, there are absolutely none of the working parts of the camera shown when the instrument is closed; merely a plate has covered with leather.

The Spring Back is adjusted by a simple mechanical method. A spring lever works in a series of notches in a brass plate. Pressure on the lever will allow the back to swing, locking it in the desired position when pressure is removed. The axis of the spring is at the center of the plate, which is optically correct.

The Premo is provided with two tripod plates, and has a post at the back for focusing.

The view finder is attached to the top and is adjustable, for taking either horizontal or vertical views.

The ground-glass screen on the Premo is spring setting. The screen does not close after withdrawing the plate-holder, but remains open for its re-insertion. A touch to a spring button closes the screen for focusing, or to insert a pressure on the holder when in place.

Glass Plates, Cut and Roll Films may all be used in the Premo as the Plate-Holder and Roll-Holder are interchangeable.

The insertion of the Roll-Holder in the Premo is very simple, indeed. Simply remove the ground-glass screen from its spring supports, attach Roll-Holder in the position formerly occupied by the screen, then place the screen back of Roll-Holder. The change from glass plates to film is but the work of a moment.

The Premo.



The Roll Holder is of the very latest design, fitted with an automatic indicator, which registers accurately the number of exposures made.

The Improved Film Shutter furnished with the Premo is one of the features of the outfit, being a strictly first class shutter in every detail. It works between the lenses, and is set by moving the upright lever to the left, the leaves remaining stationary. It has both finger and pneumatic releases, with bulb and cable.

Time exposures are made by moving the time lever up as far as possible, and while in this position, one pressure on the release lever, or bulb, will open the shutter; a second pressure will close it. The speed is regulated by turning the speed dial to the right or left, the degree of speed being indicated by numbers.

The lens is a New Rapid Rectilinear, made especially for this camera and is adapted for general work. This lens may be removed from the camera and our Wide Angle substituted when desired, as the cells of both lenses are interchangeable. It has reasonable lens board.

The Premo is made in the best possible manner, of the best materials; the box is made of mahogany, polished inside, and covered with handsome leather outside.

As will be seen by the experienced operator, the above improvements make the Premo a perfect tripod camera as well as a hand camera, possessing all the features of a first class view camera.

The holder in the Premo double holder, with rubber slides, recognized as the simplest and best in the market. The camera will carry three holders.

PRICES.

	1 1/2 x 4 1/2	4 x 5	5 x 7	6 1/2 x 9 1/2
Premo, with one holder, \$75.00	\$75.00	\$82.00	\$92.00	\$102.00
Extra for Wide Angle Lens,	10.00	12.00	15.00	18.00
Extra Film Holder,	1.00	1.00	1.00	1.25
Car Film Holder,	1.25	1.25	1.50	1.75
Roll Holder, empty,	20.00	20.00	22.50	25.00
Roll of Film, in camera 2.00	2.00	2.00	2.00	2.00
Leather Camera Case,	4.00	4.00	5.00	5.00

The Premo Sr.



The Premo Sr. represents the very lightest type of the Hessel Camera, and will, without question, find favor among those of our friends desiring a strictly high grade camera, possessing the finest adjustments and adapted for use by either the advanced amateur or the novice in the art.

The Premo Camera has grown step by step ever since its introduction, and its great popularity among all classes of both amateur and professional photographers, testifies in the most conclusive manner to its superiority.

The Premo Sr. is made from selected materials, covered with fine black leather. The appearance of the camera when open is extremely handsome, the finely polished mahogany bed, and incased metal work being in perfect contrast with the black leather covering.

The Premo Sr. contains all the essential features necessary for either hand or tripod work, in the most compact form, and at the same time is simply manipulated.

It is fitted with Double Spring Back, Double Sliding Front and Back and Focus for focusing, the working parts of which are entirely weather-tight. The camera is well balanced, and when closed is nearly a mere leather covered box.

Both the horizontal and vertical swings are at the center of the plate, and may be quickly adjusted by means of a spring lever, working in a series of notches in a brass plate at the side. A pressure on the lever will allow the back to swing, locking it in the desired position when pressure is removed.

The Double Sliding Front is an important feature and will be found convenient for work in confined situations.

It matters not whether the plate is exposed in a horizontal or vertical position, all the adjustments may be used if necessary.

The Premo Sr. is fitted with two tripod plates and has a pad at the back for focusing.

A reversible View Finder is attached to the bed for upright or horizontal pictures.

We will bring the bed when desired for use with extremely Wide Angle lenses; ordinary Wide Angle lenses do not need it.

The Premo Sr.



The Lens is a Rapid Rectilinear, adapted for all classes of work, being made especially for use with the Premo.

This Lens may be removed from the camera and our Wide Angle substituted when desired, as the cells of both lenses are interchangeable.

The Shutter is the Improved Dry, fitted with pneumatic and finger release, and is a feature of the camera. It works between the lenses without noise or jar. It is set by moving the upright lever to the left, the lenses remaining stationary. Time exposures are made by moving the time lever up as far as possible, and while in this position, a pressure on the release lever or bulb will open the shutter, — a second pressure will close it.

The speed is regulated by turning the metal disc to the right or left, the degrees of speed being indicated by numbers.

The Premo Sr. has a removable lens board, so that other lenses and shutters may be adapted if desired.

The ground glass screen is spring acting, and is the same as attached to the regular Premo. Glass Plates, Cut and Roll Films may all be used as the holders are interchangeable.

The glass holder is the regular Premo holder with rubber slides.

The Roll Holder is the latest pattern, fitted with automatic indicator, for registering the number of exposures made. The change from glass plates to film is but the work of a moment, and as the Roll Holder is provided with a shield, it is not necessary to mask to a dark room.

The size of the Premo Sr. when closed is only 12 1/2 x 7 1/2 x 2 1/2 inches, including space for three double holders, and it weighs but 1 1/2 pounds.

PRICE.

	12 1/2 x 7 1/2	4 x 5	3 1/2 x 2 1/2	4 1/2 x 3 1/2
Premo Sr. with Holder	\$24.00	\$24.00	\$24.00	\$24.00
Extra for Wide Angle Lens		10.00	12.00	14.00
Glass Plate Holder	1.00	1.00	1.00	1.00
Cut Film Holder	1.00	1.00	1.00	1.00
Roll Holder, empty	10.00	10.00	10.00	10.00
Roll of Film	1.00	1.00	1.00	1.00
Leather Covered Case	4.00	4.00	4.00	4.00
Shutter for Hinged Roll		2.00	2.00	2.00

The Long Focus Premo.



FIG. 1.



FIG. 2.

The Long Focus Premo is an entirely new form of Hand Camera, introduced for the first time this season, and we feel confident it will find favor among a very large class of workers, both amateur and professional.

As its name indicates, this style Premo possesses an extra long bellows, adapting it for the use of long focus lenses, as well as the style usually furnished.

The Long Focus Premo is similar in appearance to the Premo No. 1, as a glance at the illustrations will show, and it may be used in the same manner, either for hand or tripod work. While it is no less compact, it has nearly double the focal capacity of the Premo No. 1.

The extra length of draw is obtained by the addition of a folding back. By simply working a spring at the top, the back of the camera will drop, forming a bed, upon which the rear portion of the camera carrying the ground-glass screen will slide. A glance at Fig. 2 will convey the idea.

The Long Focus Premo may be used for copying, and all other purposes, requiring an extended length of bellows.

The Rapid Excellence Lens is conventional. The front combination may therefore be removed, and the view lens used alone when desired, which approximately doubles the length of focus. For closest view this is desirable as the objects in the view are larger in the picture.

The camera is made throughout of mahogany, handwork is polished, the exterior being covered with fine black leather.

The metal work is of polished and lacquered brass, and we have covered another year our expense to make the Long Focus Premo a perfect camera in detail as well as in theory.

The Long Focus Premo has Double Spring Back, Double Working Front, and a Fine Back and Flying movement for focusing. Both the horizontal and vertical screws revolve the center of the plate, and may be readily adjusted by a slight pressure on a lever over, now upon opening the door at the side.

